



STERLING JETTING SYSTEMS

Delivering Excellence....

The Experts in Water Jetting Technology

Company Catalogue



Who we are?

Manufacturers of High Pressure, Triplex Pumps, Cleaning Equipment & Systems – with the aim of reducing costs, improving efficiency and blending innovation. We offer broad scope of work, manpower with technical know-how and quick dispatch to boost back your productivity.

Sterling Jetting Systems, exports and provides nation-wide cleaning & de-scaling solutions to various Industries. We abide strictly to quality standards using optimum materials and procedures to offer uninterrupted services to our customers, at the same time follow win-win strategy.

Vision

“**Delivering Excellence**” is the motto of **Sterling Jetting Systems**, therefore, gaining the reputation of a reliable and trustworthy partner.

Mission

Deliver Services to the customer satisfaction and maintain strong relationships with an enhanced performance and within the parameters of **Safety, Time, Quality and Cost**.

W
S



hy
JS

**Broad
Portfolio**

Wide Range of High Pressure
Jet Cleaning Pumps & accessories.

**Quick
Response &
Dispatch**

Upstream & Downstream
Coordination to ensure effective
supply chain, conveyance and
customer Satisfaction

**Extensive
R&D**

Regular R&D makes the job
convenient, productive and
effortless.

**International
Presence**

Export High-Pressure Jetting
Pumps and Services in South-East
Asian Countries

**In-House
Manufacturing**

Production of Components
and ERP helps us save lead time
for Inventory Replenishment

**Quality
Standards &
Testing**

ISO 9001:2015, NSIC & MSME
Certified Company &
dedicated team for quality assurance
and Control

BARESHAFT PUMPS & UNITS

SJS - 2000

CrankShaft Speed n=1450/min				
Pump Type	Power (HP)	Max. Pressure (kg/cm ²)	LPM	GPM
1535	15	350	15	04
1735	17	350	17	4.5
1930	19	300	19	05
2128	20	280	21	5.5
2135	20	350	21	5.5

SJS - 10000

CrankShaft Speed n=430/min				Power Input		
Pump Type	Plunger in mm	LPM	GPM	60HP	75HP	100HP
				Max. Pressure (Kg/cm ²) @ Power (HP)		
10018	18	28	07	790	965	1300
10020	20	35	09	650	800	1065
10024	24	52	14	450	555	755
10026	26	62	16	385	475	645
10028	28	70	18	335	410	555
10030	30	80	21	280	345	470
10032	32	90	24	240	300	410
10036	36	115	30	190	235	325
10040	40	145	38	150	190	255
10045	45	175	46	120	150	200
10050	50	215	57	100	120	165
10055	55	280	74	80	100	135

SJS - 6000

CrankShaft Speed n=430/min				Power Input			
Pump Type	Plunger in mm	LPM	GPM	30HP	40HP	50HP	60HP
				Pressure (in Bars)			
6018	18	25	07	485	665	805	940
6020	20	31	08	390	535	660	760
6022	22	37	10	330	450	555	630
6024	24	44	12	275	375	465	530
6026	26	52	14	235	320	395	450
6028	28	60	16	200	275	340	390
6030	30	69	18	175	230	285	340
6032	32	78	21	155	210	260	295
6036	36	99	26	115	155	195	235
6040	40	122	32	95	125	160	190
6045	45	155	41	75	105	125	150
6050	50	191	50	60	85	105	120
6055	55	232	61	50	70	85	100

SJS - 15000

CrankShaft Speed n=435/min				Power Input			
Pump Type	Plunger in mm	LPM	GPM	75HP	100HP	125HP	150HP
				Max. Pressure (Kg/cm ²) @ Power (HP)			
15018	18	33	09	840	1125	1340	1630
15020	20	44	12	695	920	1100	1305
15024	24	60	16	480	655	790	905
15026	26	72	19	405	560	670	770
15028	28	84	22	355	485	580	665
15030	30	96	25	305	420	505	580
15032	32	110	29	270	370	445	505
15036	36	139	36	205	285	340	400
15040	40	170	45	165	225	270	325
15110	110	215	57	130	175	215	255
15050	50	269	71	105	145	170	205
15055	55	325	86	90	120	140	270
15060	60	387	102	70	100	120	145

BARESHAF PUMPS & UNITS

SJS - 18000

CrankShaft Speed n=475/min				Power Input				
Pump Type	Plunger in mm	LPM	GPM	75HP	100HP	125HP	150HP	175HP
Max. Pressure (Kg/cm ²) @ Power (HP)								
18018	18	38	09	840	1035	1235	1470	1750
18020	20	47	12	695	850	1010	1220	1430
18024	24	68	16	480	600	720	860	1000
18026	26	79	19	405	515	620	760	845
18028	28	92	22	355	445	580	655	730
18030	30	106	25	305	390	460	565	635
18032	32	120	29	270	340	410	500	560
18036	36	152	36	205	260	310	380	440
18040	40	170	45	165	205	243	300	355
18045	110	215	57	130	160	195	235	280
18050	50	269	71	105	130	155	190	225
18055	55	325	86	90	100	130	160	185
18060	60	387	102	70	95	110	135	155

SJS - 22000

CrankShaft Speed n=650/min				Power Input			
Pump Type	Plunger in mm	LPM	GPM	125HP	150HP	180HP	220HP
Max. Pressure (Kg/cm ²) @ Power (HP)							
22020	20	50	13	940	1100	U/A	U/A
22024	24	70	18	650	790	950	U/A
22026	26	82	22	560	670	810	915
22028	28	96	25	480	585	725	830
22030	30	110	29	420	510	630	725
22032	32	126	33	365	440	550	630
22036	36	160	42	290	350	430	500
22040	40	200	53	235	280	350	400
22045	145	250	66	185	220	275	315
22050	50	310	82	150	180	220	250

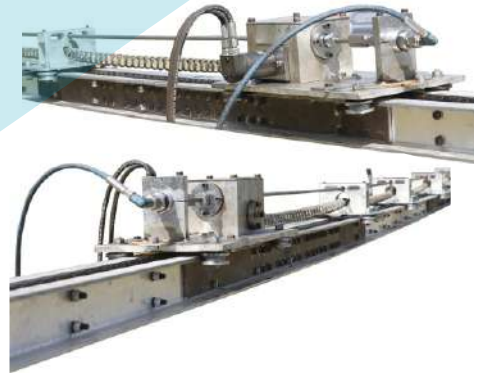
SJS - 34000

CrankShaft Speed n=450/min				Power Input			
Pump Type	Plunger in mm	LPM	GPM	180HP	215HP	270HP	340HP
Max. Pressure (Kg/cm ²) @ Power (HP)							
34026	26	86	23	815	990	1235	1540
34028	28	100	26	700	850	1060	1315
34030	30	114	30	610	740	925	1145
34032	32	130	34	535	650	815	1010
34036	36	165	43	425	515	645	800
34040	40	203	54	345	415	520	645
34045	45	258	68	270	330	410	510
34050	50	318	84	220	265	335	415
34055	55	385	102	180	220	275	340
34060	60	458	121	155	185	230	285
34065	65	537	142	130	160	200	245
34070	70	623	164	110	135	170	210
34075	75	715	188	100	120	150	185
34085	85	919	190	75	90	115	145
34095	95	1148	303	60	75	90	115

HYDRO-JETTING EQUIPMENTS

MULTI-LANCING SYSTEMS

SJS offers multi-lancing systems for tube/heat exchangers cleaning in industries such as Refineries, Power plants etc. The cleaning process is carried out for a wide range from **100 Bar to 2200 Bar**. This mechanism is useful for applications wherein the reach of maintenance team is not possible due to reasons like toxic Hydrogen Sulphide Gas in Crude oil extraction industry. Moreover, this system helps to improve productivity of our customers and in hand, saves manpower.



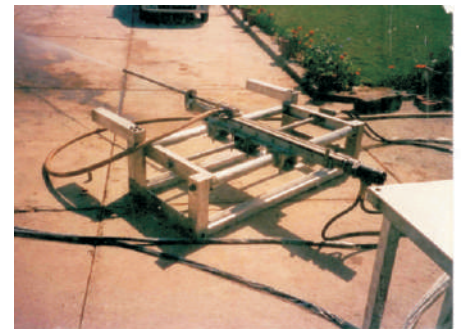
ROTARY HOSE DEVICE (RHD)

The **SJS-RHD** Rotary Hose Device is a compact pipe. The hose unit can be either air or hydraulically driven, allowing operators to easily feed high-pressure hose in and out of the pipe. The automated feeding and retrieving action eliminates the physical strain placed on personnel of pulling hose under high-pressure. The Rotating device causes the nozzle to travel along the inner diameter of pipe, which improves cleaning coverage, while also helps the nozzle navigate around tight bends and curves. When coupled with SJS line mole nozzle the SJS-RHD is the ideal system for extreme cleaning conditions.



H.P. GUN INDEXERS

High Pressure gun indexers are used for coolers/ heat exchanger cleaning in oil and gas industries. This mechanism is tested and applied for cleaning of outer surface of pipelines.



PTFFE BOX CLEANING SYSTEMS

SJS offers Plate Type Falling Film Evaporator (PTFFE) cleaning system which is basically used by wide range of Sugar Industry. Powered by SJS make High Pressure hydro-Jet Pump to discharge the water output which is used for cleaning of Tube/Plate bundles. This facilitates the feasible & fast cleaning equipment where less workforce is required. It is simply operable and effortlessly moves horizontally as well as vertically at same time. Capable of discharging upto 1000 Bar/Kg. @ 70 LPM & designed for easy cleaning Of Choked/ Hard scale job. Prevents loss of risk & damage, accidents etc.

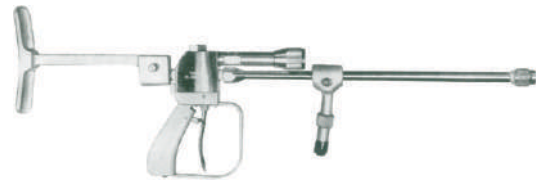


ACCESSORIES & ATTACHMENTS

TRIGGER OPERATED GUN

Lighter and economically designed for operator comfort and safety. Features 3600 fully adjustable dump water direction. All shoulder stocks and hand grips are adjustable. Power to handle the toughest jobs swiftly and effectively. Features 60 second cartridge overhaul.

Lance Dump Gun is the basic tool of Hydro jetting and SJS offers more choices — with more safety and ergonomic features. Our Hand Gun with operating pressures as low as 500 bar and as high as 1000 bar. All feature rigid stainless steel construction and work with a variety of nozzles.



FOOT OPERATED VALVES

Dump Style and shut-off style - for applications from to 1000 kg/bar. Dump-style valves allow instantaneous dump to low pressure when the foot pedal is released. Shut-off valves minimize water in the work area by dumping it elsewhere via unloader valve. SJS foot control valves have a patented pedal design that dumps pressure immediately.

Salient Features

1. Ideal for Hands-free operations when using flex lances
2. Non Corrosive stainless steel components
3. Robust foot pedal assembly



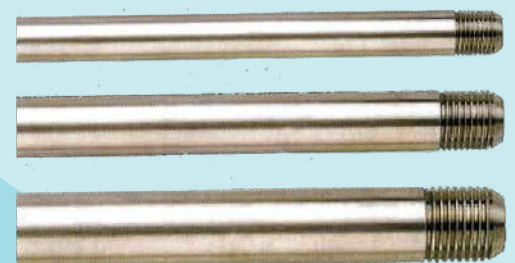
NOZZLE

SJS offers a wide range of nozzles for many different applications. Be it a simple zero degree nozzle for use on the end of a hand lance, a custom drilled pipe or tube cleaning nozzle, or a specially engineered rotating nozzle, SJS offers them all. And, as with all of SJS's high pressure water jetting equipment, you can be assured you are buying the highest quality components available.



RIGID LANCE

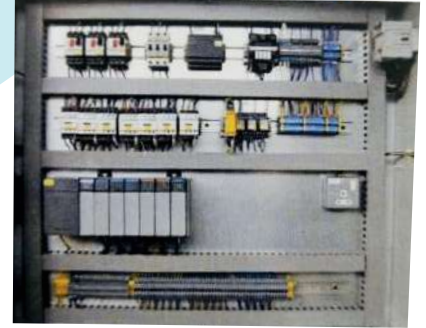
Rigid lances are available in various diameters, rated for all popular pressures. They come in lengths of 20 feet (6m), which can be assembled, with couplings, into longer lances. Optional hand guides (BL13033) help an operator position the lance and support it without slowing the rotation speed.



ACCESSORIES & ATTACHMENTS

PLC ELECTRICAL PANEL

A Programmable Logic Controller (PLC) has input lines, to which sensors are connected to notify over-heating or liquid level & output lines, to which actuators are connected to affect or signal reactions to the incoming events (such as start an engine, open/close a valve, and so on). The system is user programmable. It uses a language called "Relay Ladder" or RLL (Relay Ladder Logic).



STAR DELTA STARTER PANEL

A DOL Starter is a Direct-On-line motor starter. Sometimes known as an "across the line" starter, this type of motor controller is used as a simple starter for larger electric motors, providing full line voltage to the motor terminals.

They are used in an attempt to reduce the start current applied to the motor during start as a means of reducing the disturbances and interference on the electrical supply.



FLEX LANCE

SJS flex lances make pipe and tube cleaning a breeze, snaking around bends to remove even hardened deposits. We offer a wide range of diameters and connections, in pressures of 10,000 psi, 20,000 psi and 40,000 psi (700, 1,400 and 2,800 bar). Flex lances are available with abrasion-resistant RP hose (nylon cover also reduces friction) or kink-resistant SRV hose (2 spirals of high-tensile, stainless steel wire). Our HP flex lance is reinforced with 6 layers of steel wire.

Salient Features:

Smooth inner core to minimize pressure drop; Compact end connection to handle tight bend radius Stocked in 25' and 50' lengths; also available up to 200' (7.6m and 15.2m, up to 61 m).



HIGH PRESURE DELIVERY HOSE

SJS stocks a complete line of High-Pressure hoses for working pressures upto 1500 bars. Most hoses are of 25, 50 and 100 feet length.

Salient Features:

Smooth inner core to minimize pressure drop; High tensile spiral wire for strength and kink resistance; Tough outer cover to prevent abrasion.



SERVICES

CLEANING SYSTEMS

SJS offers High Pressure Hydro-Jet cleaning system for **Coke Oven Door Frame** in steel plants, **Condensers, Evaporators, Heat-Exchangers, Cooling Towers & Fins** in Air Cooled Condenser Cleaning System. Keeping the finned tube surfaces of your air cooled condenser or fin fan unit clean is imperative for maintaining optimal performance and reliability. Units fouled with dust, dirt debris, pollen leaves and other deposits can rob your Plant of precious output.



STEEL DE-SCALING SYSTEMS

The Scale, or the oxides on the surface, is blasted from the hot steel with a jet of water. Wherever heated steel is shaped, a de-scaling system increases the quality of the components. At the same time, wear in the forming equipment is minimized. The scale layer is broken up by the high pressure water jet, the scale shrinks due to the spontaneous cooling. SJS high pressure plunger pumps are designed in accordance to high pressure and high flow rate demands.



HYDRO STATIC TESTING

A Hydro-testing is a process in which pressure vessels such as pipelines, plumbing, gas cylinders, boilers and fuel tanks can be tested for strength and leaks. The test involves filling the vessel or pipe system with a liquid, usually water, which may be dyed to aid in visual leak detection, and pressurization of the vessel to the specified test pressure. The location of a leak can be visually identified more easily if the water contains a colorant.



RE-TUBING

Tubes are constantly expanding and contracting as they heat up and cool down during normal operations. Salt water scale, calcium, lime and other contaminants can compound the problem, leading to even faster deterioration. Over time, these factors inevitably lead to failure and the tubing must be replaced. SGS offers complete, on-site re-tubing service for all types of heat exchangers.

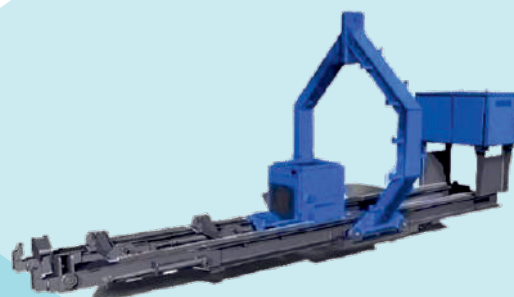


TUBE BUNDLE PULLER

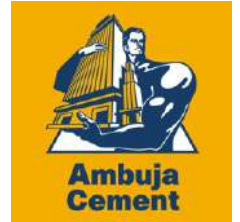
Tube Bundle Extractor specially designed to remove the tube bundle from the tube sheet without damage to shell of heat exchangers. Head prism movable up and down for taking up and holding of the bundle flange. All functions hydraulically operated by remote control 24 volts.

Salient features -

Less dead weight; More safety for operator due to electric remote control system; Independent of separate energy sources; Faster working due to the head prism movable up and down.



OUR CLIENTS



SPARE PARTS & CONSUMABLES

CRANKSHAFTS

We provide spare parts like bearings, plungers of hard materials such as ceramics, steel etc, piston, connecting rod, regulating rod, valve guide, seat, crankshaft for high pressure hydro-jetting pumps of pressure (from 350 to 1540 in kg/cm²) and power from 15hp to 340hp respectively.



NOZZLE

Sterling Jetting supplies a line of high-production Mole-type Nozzles designed especially for use with Flex or Rigid lances to clean heavily fouled Tubes/Jobs. They come in a variety of nozzle patterns to suit pressures from 10,000 to 15,000 PSI or according to your specific application. These line mole nozzles use a variety of Hardened stainless steel or tungsten carbide jet nozzle for longer service life which inserts to achieve the ideal flows and pressures.



PUMP HEAD SERVICE KITS

Sterling Jetting Systems now offers a complete line of OEM service kits to make your life easier by giving you all you need in a series of money-saving replacement part kits. We offer packaged brass kits, discharge valve kits, seal kits and suction valve kits for all of our water jetting triplex pumps. This convenient approach minimizes errors, saves time and saves money.



Pump Parts Replacement

Sterling Jetting Systems also makes U.T Pumps each and every part by exacting standards on state of the art machinery for maximum life and performance! Accept only the best to keep your pumps in prime condition! Sterling Jetting is the #1 source for original, factory-fresh replacement parts for Water blasting pumps, made to the strictest technical standards. We can help you keep your pumps running perfectly!



Contact Us:

OFFICE / WORKS: Plot 78, Vishwakarma Industrial Area,
Bankhari-Pali Road, Bankhari,
Faridabad 121004

PHONE: +91-129-2984894

MOBILE: +91-9818844894
+91-9871534317
+91-9711831138

EMAIL: sterlingjetting.systems@gmail.com
connect@sterlingjetting.in
sales@sterlingjetting.in
prop@sterlingjetting.in